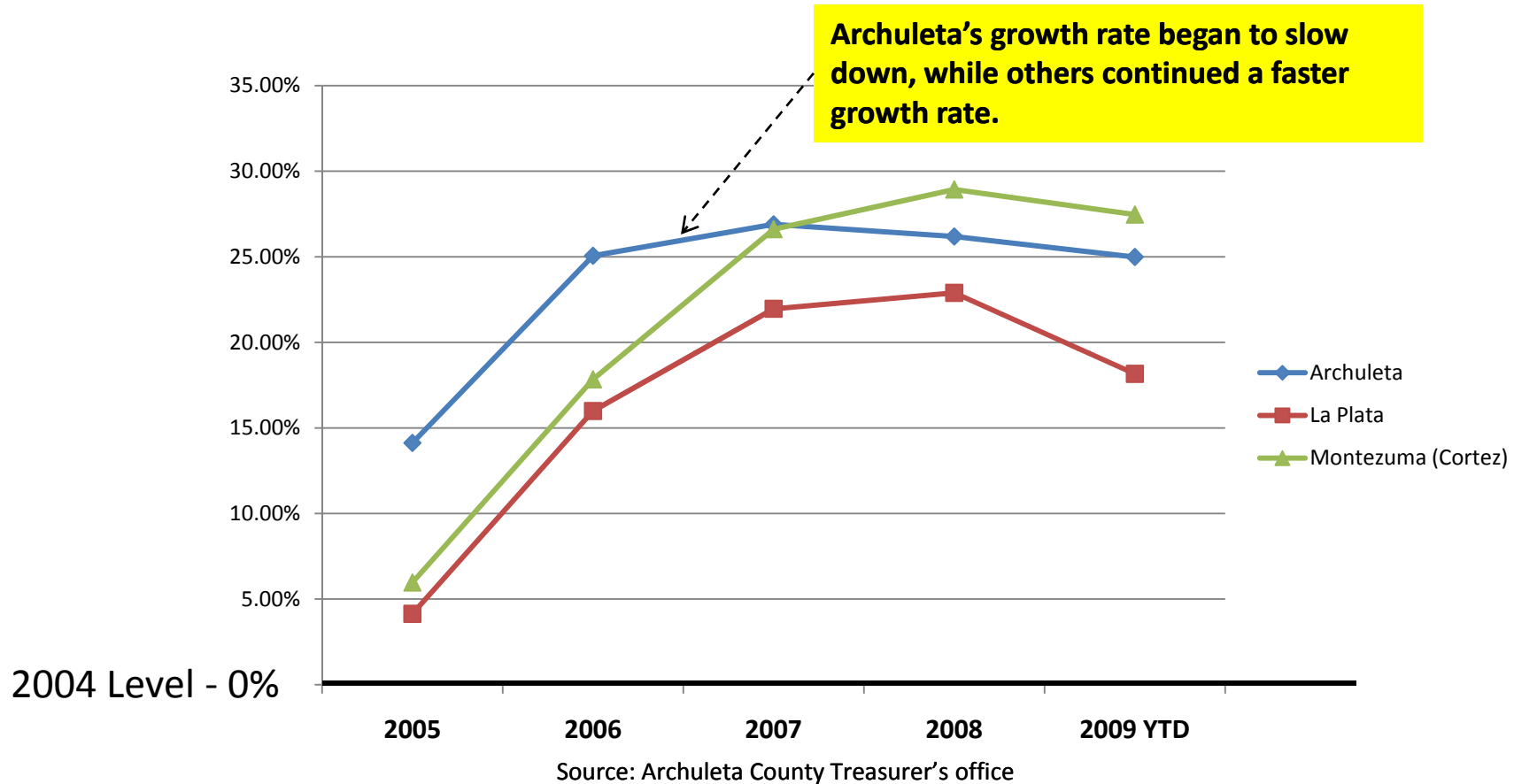
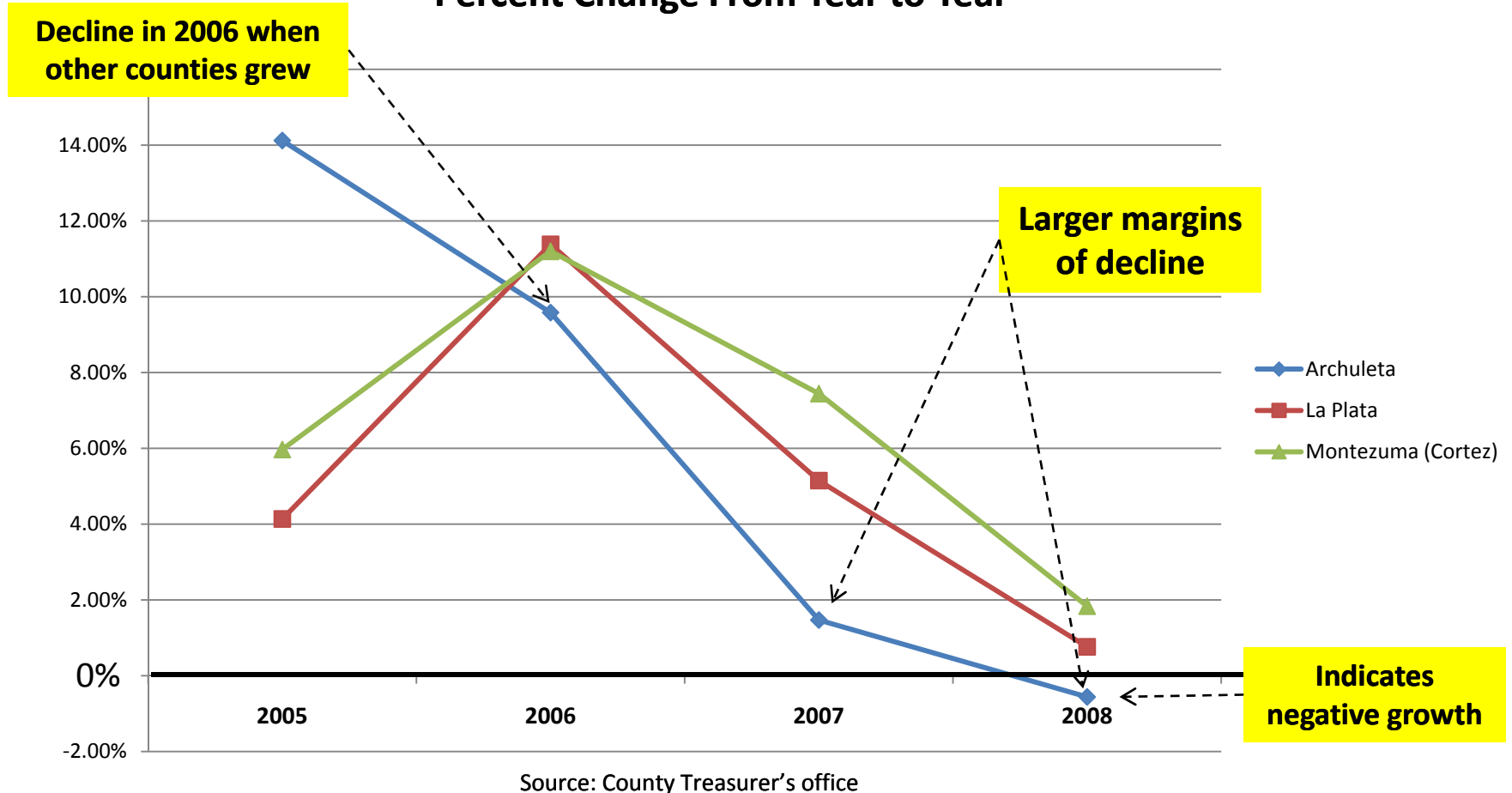


Percent Change From 2004 Sales Tax Levels



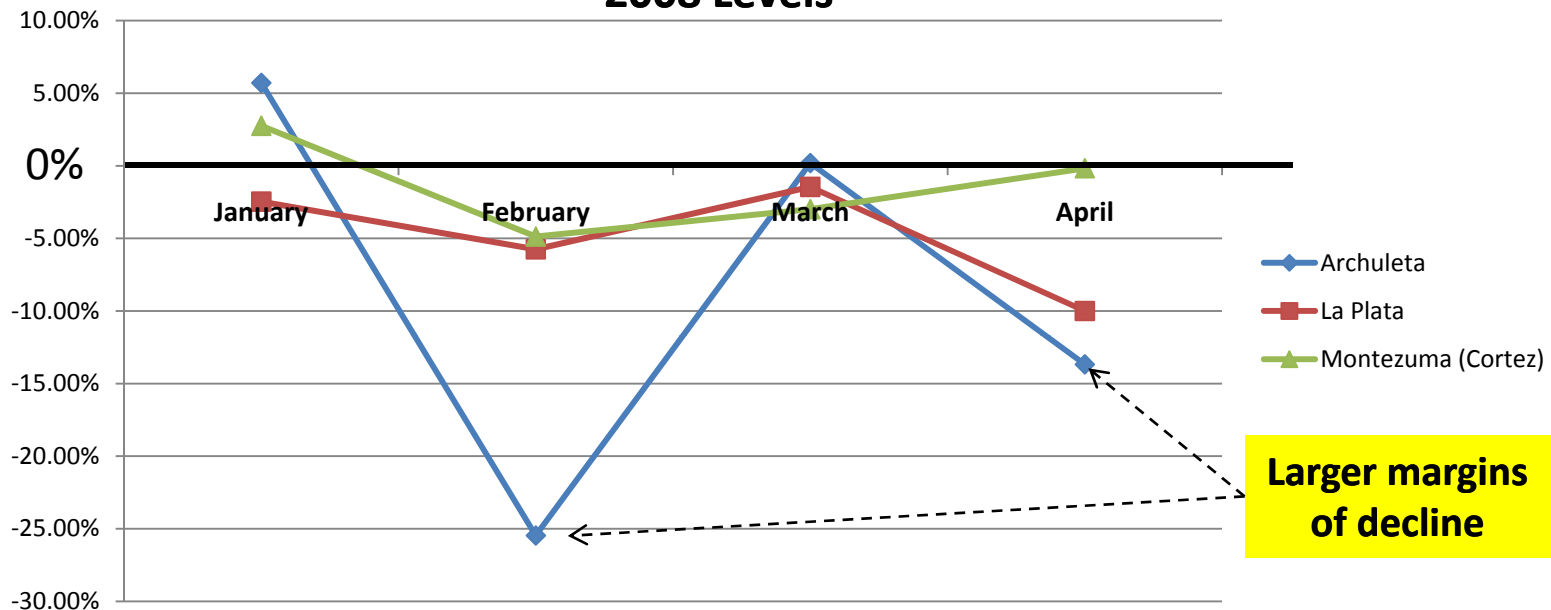
Data shows that since 2004 Archuleta County sales tax has grown nicely, with a slight decline in growth rate starting in 2007. When compared to other counties, Archuleta's growth began to decline in 2007, vs. La Plata and Montezuma beginning a decline in 2008.

Percent Change From Year to Year



Data shows sales tax growth rate in Archuleta in a downward trend since 2005, when compared to each previous years sales tax. La Plata and Montezuma counties growth rate is on a slower negative trend that Archuleta's.

Percent Change From Month to Month for 2009 from 2008 Levels



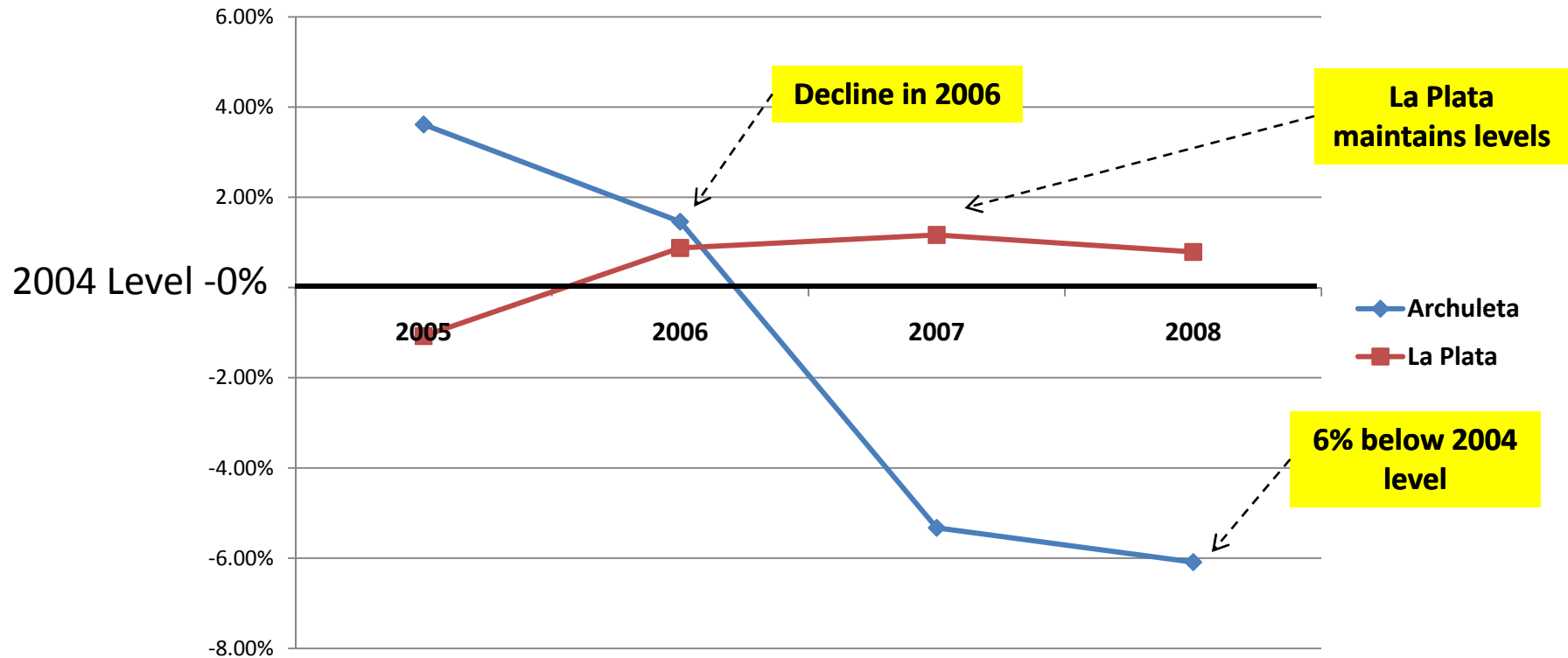
Overall Percent Change from 2008 to 2009, YTD

Archuleta:	-8.6%
La Plata:	-4.84%
Montezuma:	-1.37%

Source: County Treasurer's office

Data shows that when compared with 2008 monthly levels, January and March were slightly up, but the rest of the months were down. Overall, Archuleta is down 8.6% from 2008 levels, January – April. La Plata County and Montezuma are down as well, although not as much as Archuleta's levels.

Percent Change From 2004 Enrollment Levels

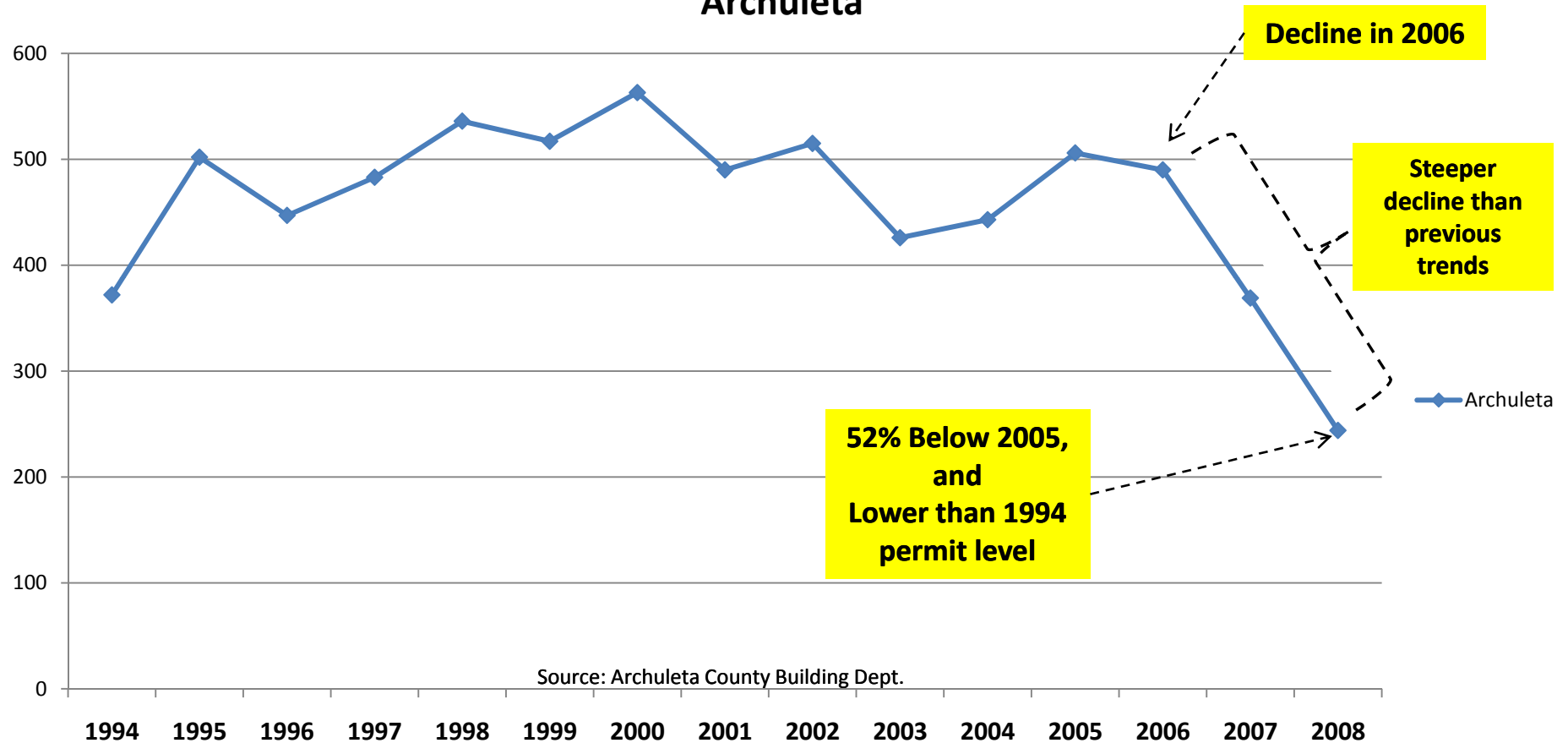


Source: County School Districts

Data shows Archuleta grew from its 2004 levels in 2005 and 2006, but since that time has seen a decline in enrollment to -6.09% in 2008. La Plata has remained somewhat stable since 2006.

Total Building Permits by Year

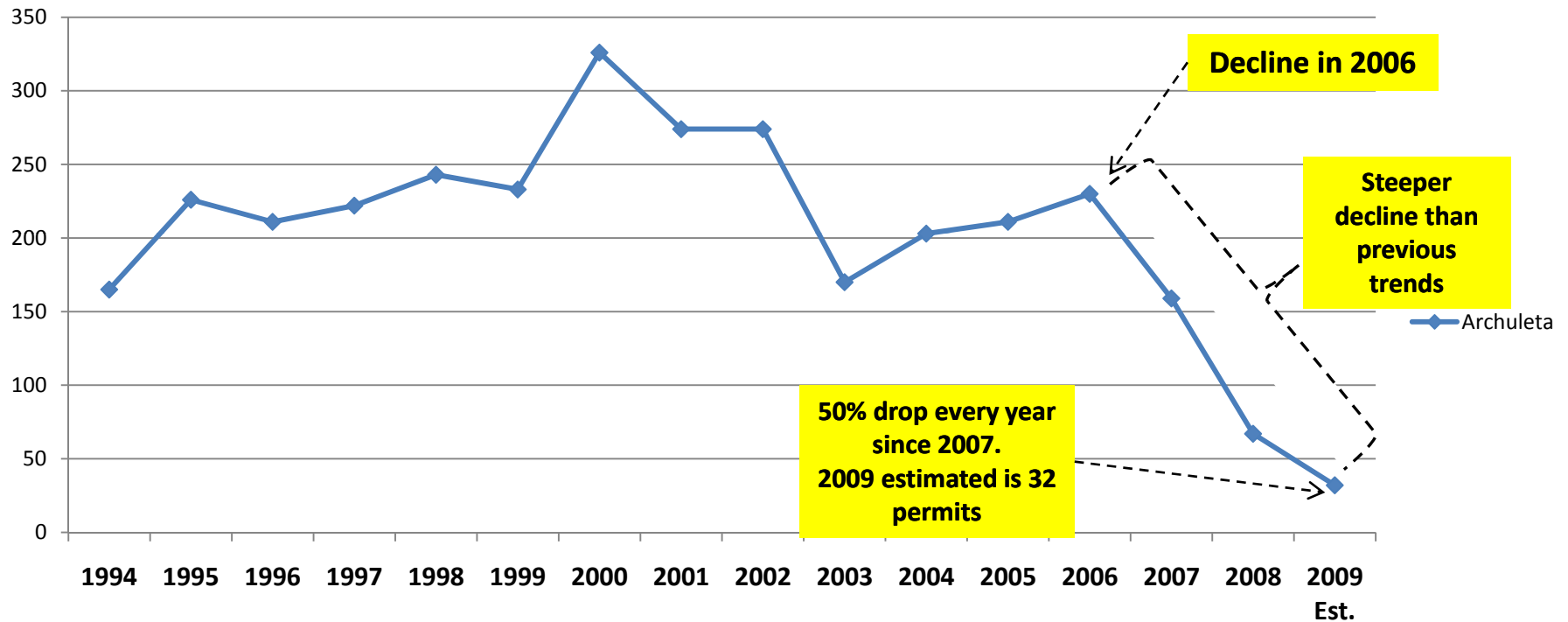
Archuleta



Data shows Archuleta in permits from 1994 to 2000, then declined from 2000 to 2003. From 2003 to 2005 we grew, but have been a sharp decline from 2006 to 2008. We are now lower than 1994 permit levels, down 52% from 2005.

Total Residential Single Family Building Permits by Year

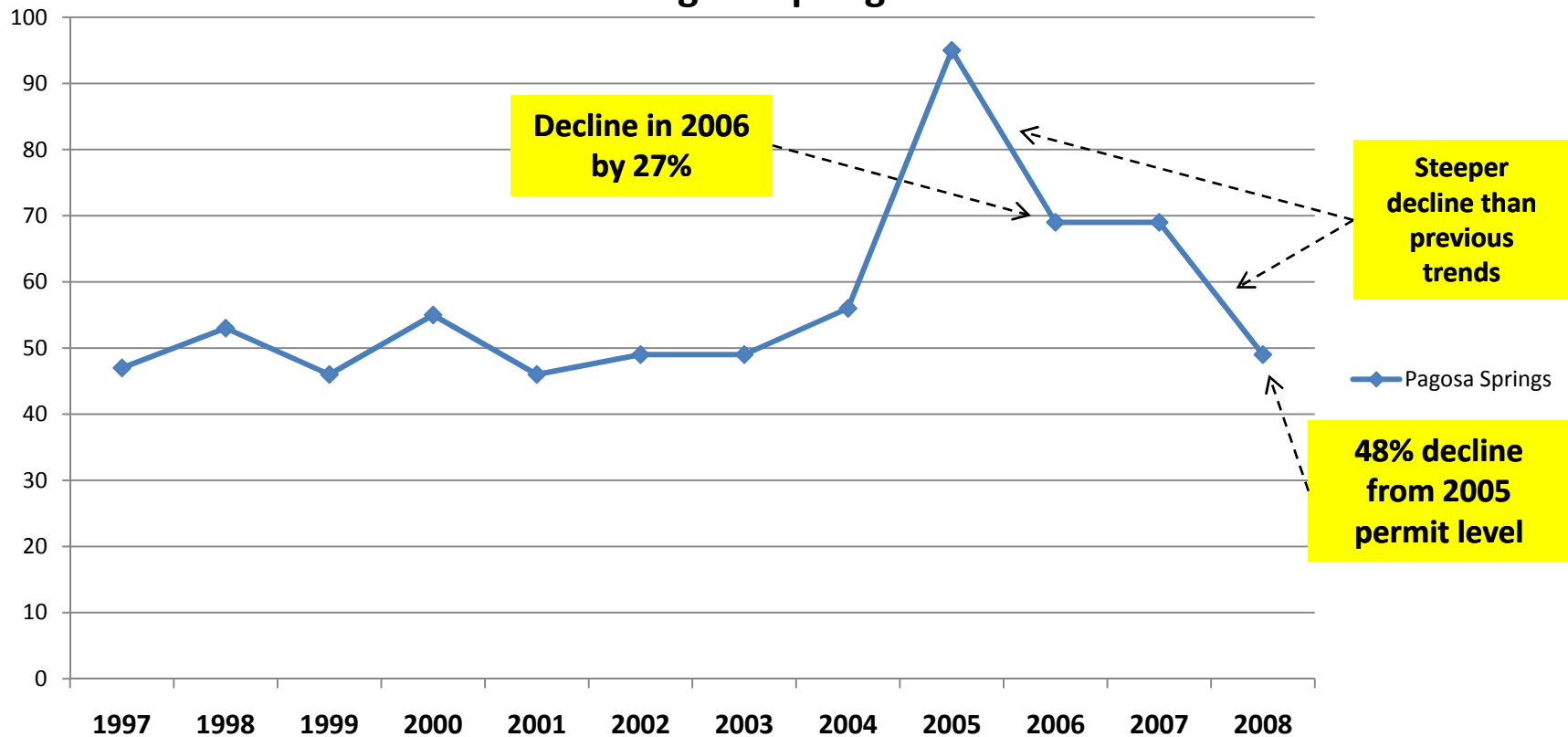
Archuleta



Source: Archuleta County Building Dept.

Data shows a steep decline since 2006. Single Family permits have dropped every year by 50% since 2007. Estimated 2009 single family permits is 32, based on 16 total June YTD.

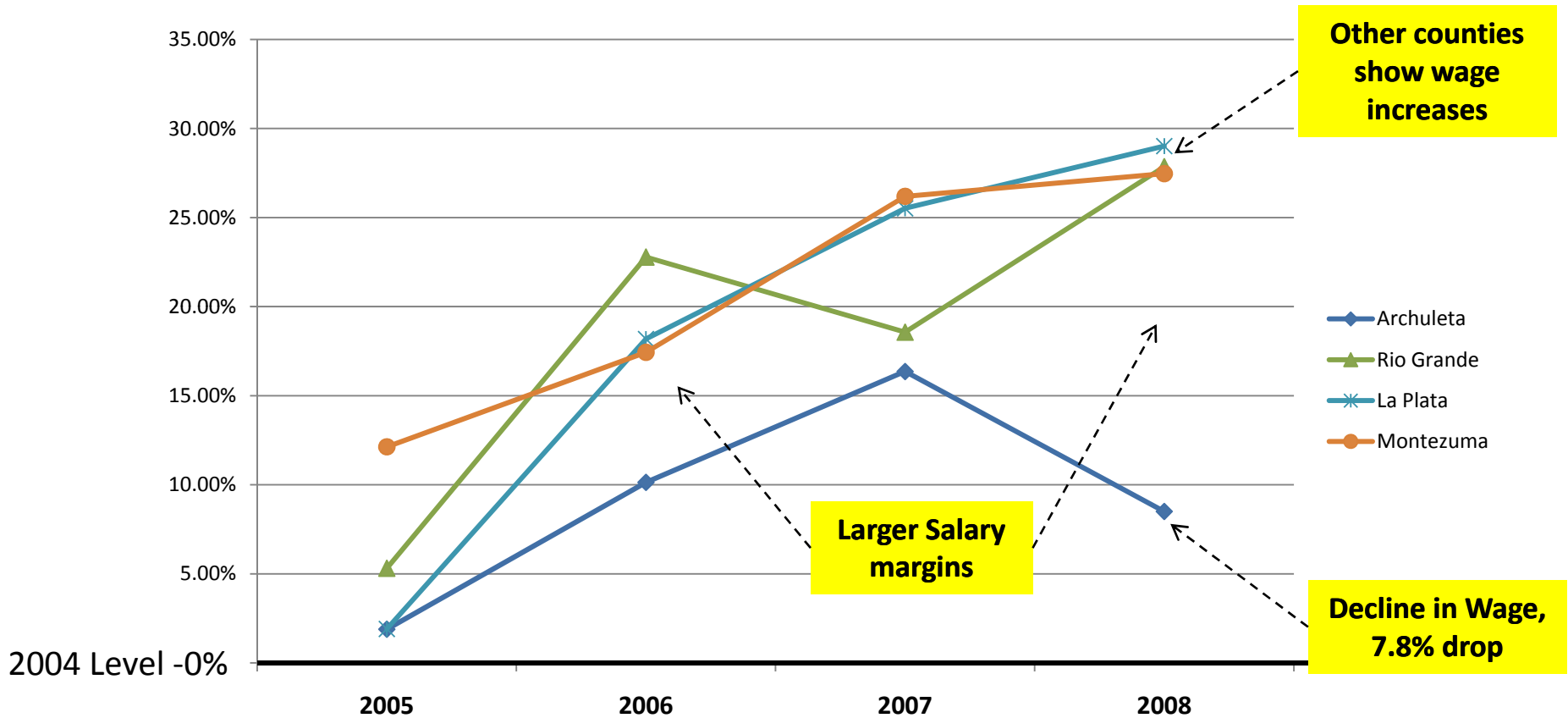
Total Building Permits by Year Pagosa Springs



Source: Town of Pagosa Springs Building & Planning Dept.

Data shows Pagosa's permits were relatively flat until 2004, when a growth period occurred until 2005. In 2006, the number of permits went down by 27% from 2005 level. The decline has continued, and as of 2008, we are down 48% from 2005 permit level.

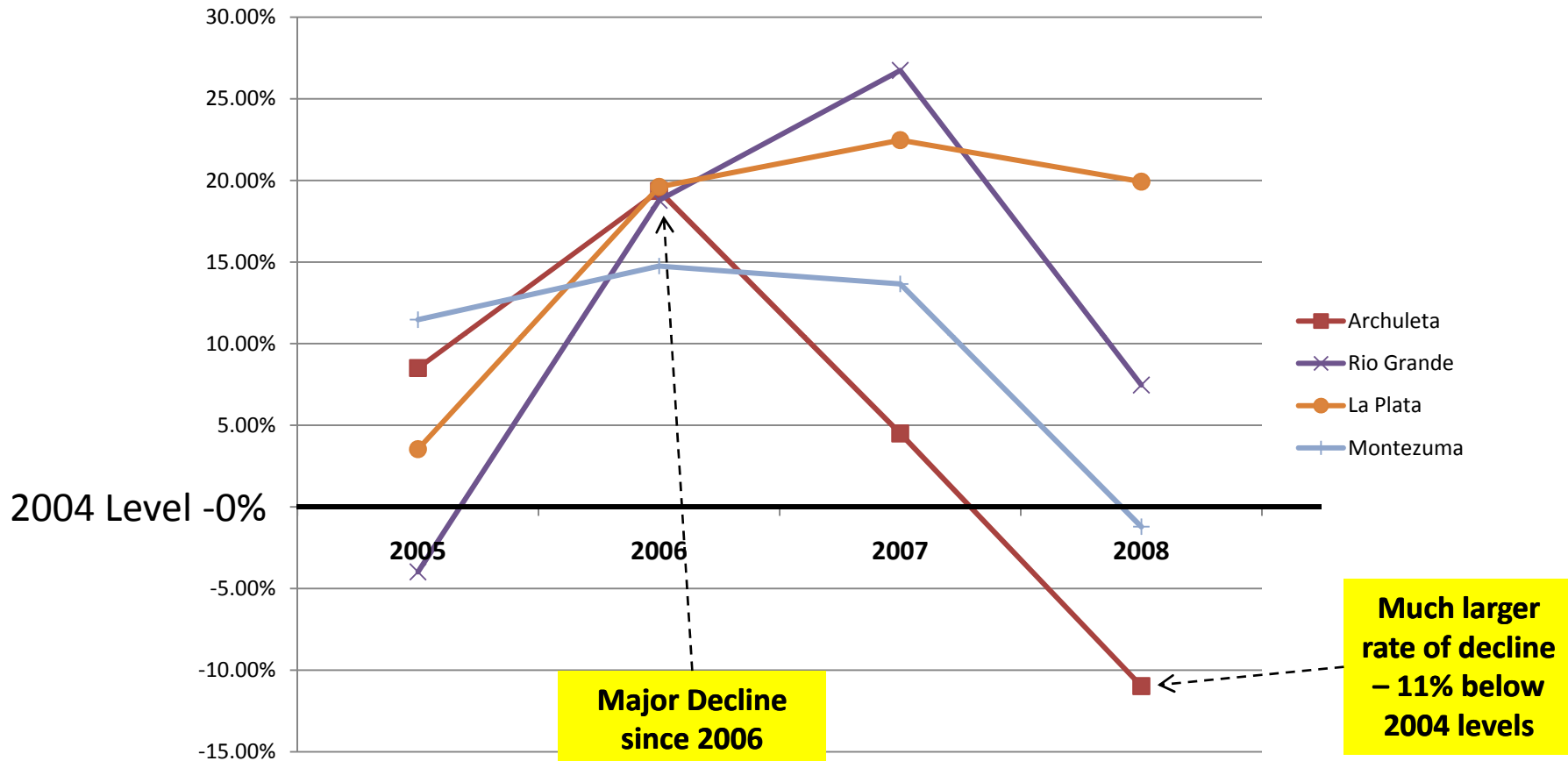
Percent Change from 2004 in Construction Avg. Weekly Wage



Source: CO Department of Labor

Data shows Archuleta's average weekly wage for construction was climbing until 2007, where it reached a peak of 16.36% growth, then declined to 8.5%, a difference of 7.86% in one year. All the other counties show growth in avg salary. Notice margin of difference between Archuleta salaries and other Counties year to year.

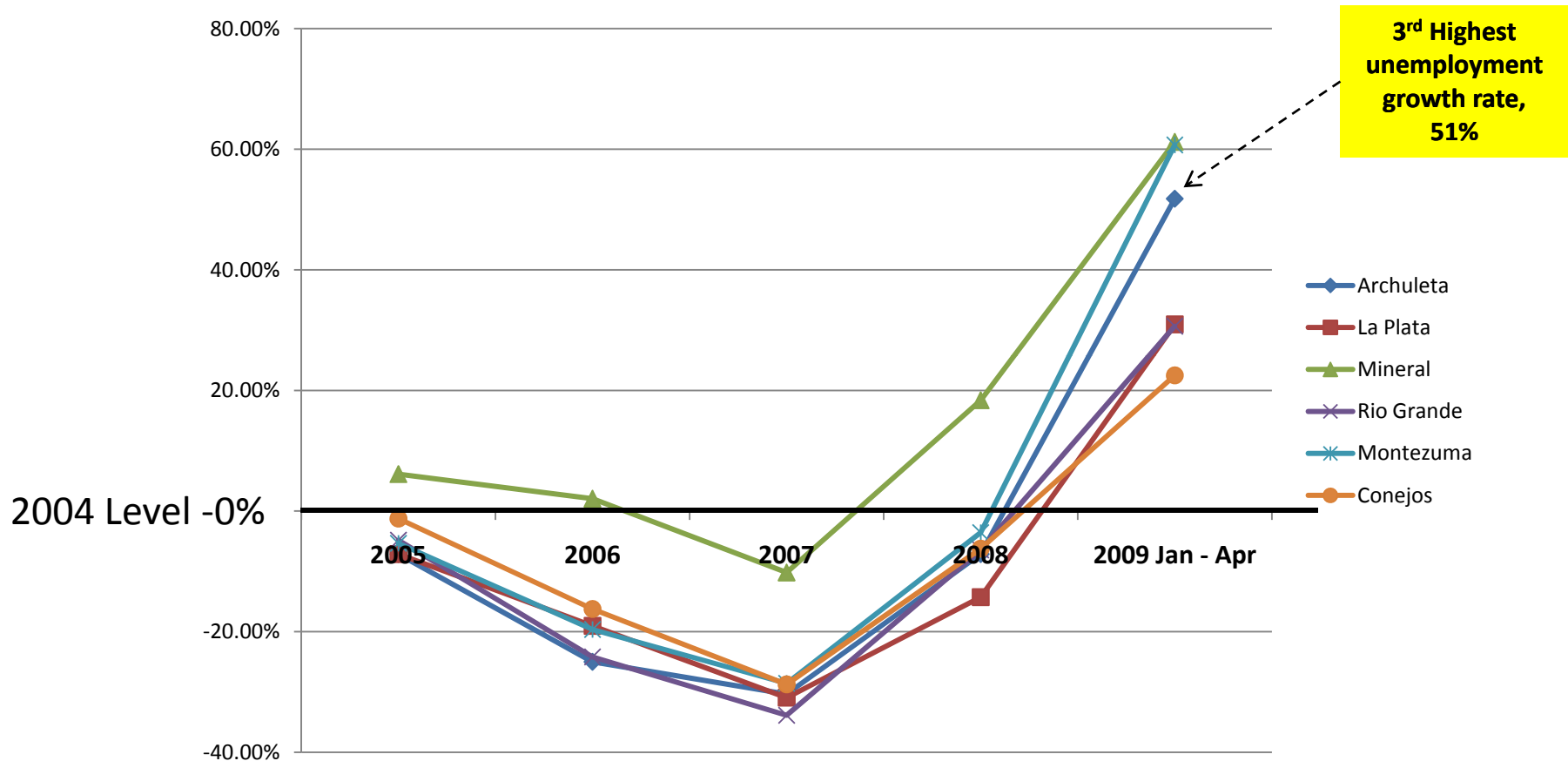
Percent Change from 2004 Levels in Construction Employment



Source: CO Department of Labor

Data shows Archuleta's construction employment was growing until 2006. It then declined sharply. In 2008, it declined to 11% below 2004 employment levels. Other counties have also seen a decline in employment levels, although don't appear to be as drastic.

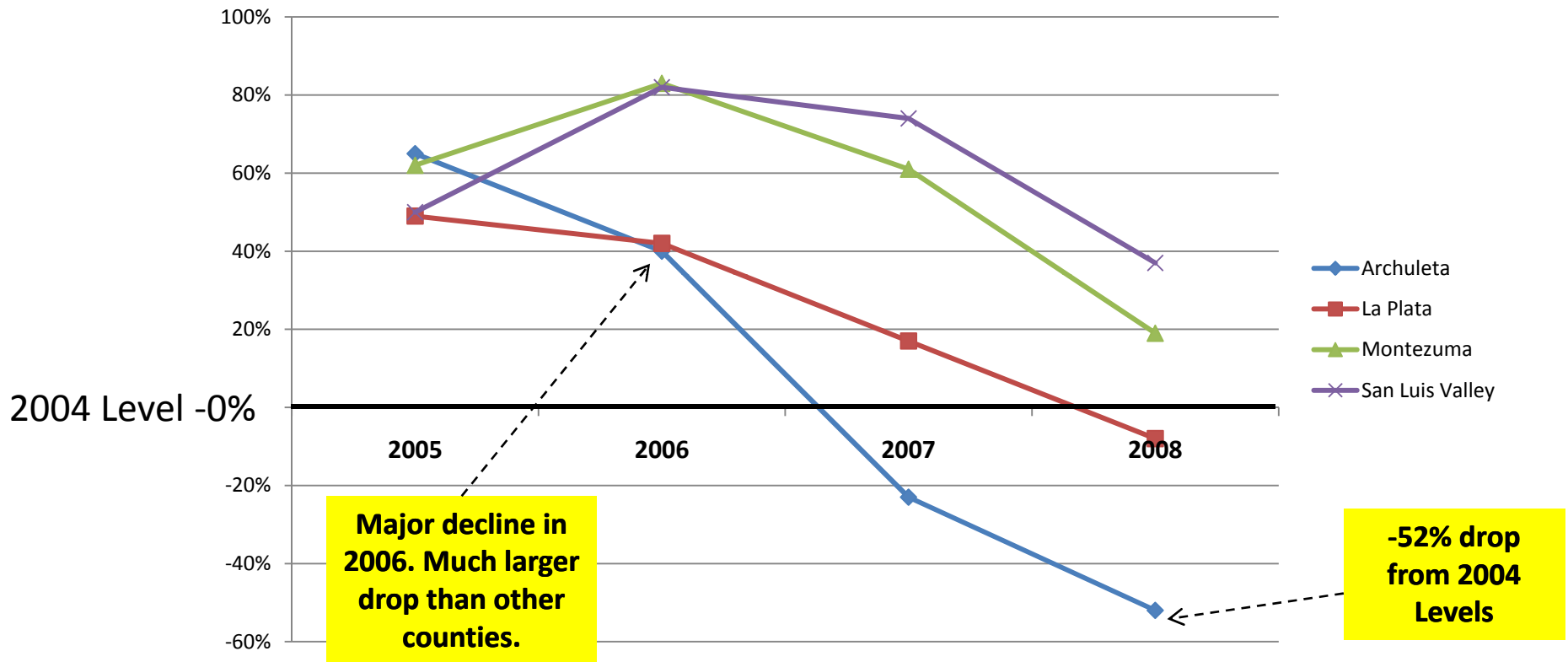
Percent Change from 2004 Unemployment Levels



Source: CO Department of Labor

Data shows Archuleta's overall unemployment was improving from 2004 to 2007, then began rising in 2008. Currently, Archuleta's unemployment is over 51% higher than it was in 2004, sitting at 8.5% from Jan – April 2009. Other counties have fallen suit, with Mineral and Montezuma showing the worst change from 2004 levels.

Percent Change from 2004 Real Estate Levels (All classes) Total Number of Sales



Data shows Archuleta begin declining in real estate sales in 2006, and has a much larger rate of decline than other counties. Archuleta has dropped 52% in total number of sales since 2004. Other counties have dropped, but remained positive in growth.

Fee Comparisons

Fee Type	Archuleta	Pagosa Springs	La Plata	Durango	Bayfield	Ignacio	Montezuma	Cortez	Mineral
Permit Cost	\$2,264.95	\$2,264.95	\$2,787.20	\$2,693.00	\$3,062.00	\$2,315.20	\$0.00	\$2,328.95	\$873.34
Impact Fee	\$0.00	\$3,816.00	\$0.00	\$3,553.00	\$1,202.00	\$683.00	\$0.00	\$0.00	\$0.00
Use Tax	\$0.00	\$0.00	\$0.00	\$5,067.91	\$0.00	\$0.00	\$0.00	\$0.00	\$0.00
Road & Bridge	\$115.00	\$50.00	\$225.00	\$0.00	\$0.00	\$10.00	\$0.00	\$27.50	\$75.00
Water Tap	\$0.00	\$0.00	\$5,000.00	\$123.00	\$4,334.00	\$1,500.00	\$5,400.00	\$3,200.00	\$750.00
Water Meter	\$1,270.00	\$1,270.00	\$650.00	\$150.00	\$700.00	\$155.00	\$900.00	included	\$0.00
Investment Fee	\$5368.50	\$5,368.50	\$0.00	\$5,582.00	\$0.00	\$6,783.00	\$0.00	\$0.00	\$0.00
Resource Fee	\$8,425.50	\$8,425.50	\$0.00	\$0.00	\$0.00	\$0.00	\$0.00	\$0.00	\$0.00
Sewer	\$6773.00	\$4,500.00	\$2,000.00	\$1,535.00	\$6,050.00	\$6,550.00	\$0.00	\$4,500.00	\$3,150.00
Totals	\$24,216.95	\$25,694.95	\$10,662.20	\$18,703.91	\$15,348.00	\$17,996.20	\$6,300.00	\$10,056.45	\$4,848.34

Data taken by surveying local governments. Each area was asked to give total fees based on the following:
 Residential Home, Living sq.ft. = 3236, Garage sq.ft. = 659, Covered Porch sq.ft. = 275, Total Sq.Ft. = 4170
 ¾" water meter, value of construction = \$327,000

Data shows Archuleta County and Pagosa Springs the highest areas for fees when getting a residential building permit with similar square footage, water meter and value of construction.